



Research Update and Seasonal Greetings

December 2022

Seasonal Greetings from the Director

What a year it has been! A major highlight was having so many friends join us for the October celebration of 60 years since Cabinet founded the AERU. We were created in 1962 to help agribusiness and policy advisors explore new opportunities in global markets for New Zealand's quality food and fibre products. This remains a key part of our mission today.



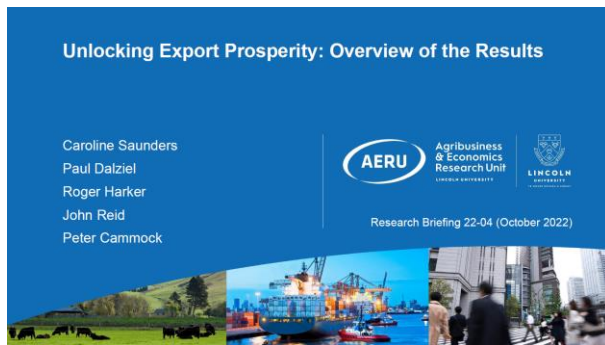
As part of that mission, 2022 saw the AERU complete two large research programmes on global agri-food value chains, funded by the Our Land and Water National Science Challenge and by the Ministry of Business, Innovation and Employment. We also undertook significant work for industry and policy partners. Peter Tait led the AERU's extensive [Consumer Research](#) in key market segments for New Zealand exporters, with strong support by Meike Guenther, Timothy Driver and Paul Rutherford. Paul Dalziel was an important figure in the creation of the [Wellbeing Economy Alliance Aotearoa Hub](#). Anita Wreford led the team who prepared the [Westpac NZ Agribusiness Climate Change Report](#). John Saunders is science co-lead in the Our Land and Water programme, [Horticultural Disease Risk in a Changing Climate](#), examining increased risk of plant pathogens under climate change. Tiffany McIntyre's research on [The Value Chain Compass](#) is receiving a lot of attention.

Other causes for celebration have been major milestones for researchers in the AERU team. Tiffany McIntyre, Léonie Mollet, Simon Duff and John Saunders completed their PhD degrees, while Tim Driver received his Masters' degree. Meike Guenther was elected to the Council of the New Zealand Agricultural and Resource Economics Society and John Saunders was elected to the New Zealand Association of Economists Council, where Peter Tait is Immediate Past President. Anita Wreford was a lead author for the International Panel on Climate Change. Paul Dalziel received the Distinguished Service Award from the Regional Studies Association in the UK, while Paul Rutherford completed his second Student Diversity report for Lincoln University. Elizabeth Elliot Noe joined us as a Post-Doc at the beginning of the year, and has already published two articles on urban forest restoration. Sara Rauf and Mark Kroening have begun their PhD research funded by scholarships from the Joint Postgraduate School *Food Transitions 2050*. Teresa Cunningham continued her service as Secretary to the University's Sustainability Action Group for the Environment (SAGE).

On behalf of the whole team, I wish everyone a very happy holiday season.

Caroline Saunders

Unlocking Export Prosperity



Unlocking Export Prosperity was a five year research programme designed to help support the transformation of New Zealand's agri-food exports from volume to value. It involved a partnership between researchers at four institutions: The AERU at Lincoln University; Plant and Food Research; The Ngāi Tahu Centre at the University of Canterbury; and The Leadership Lab.

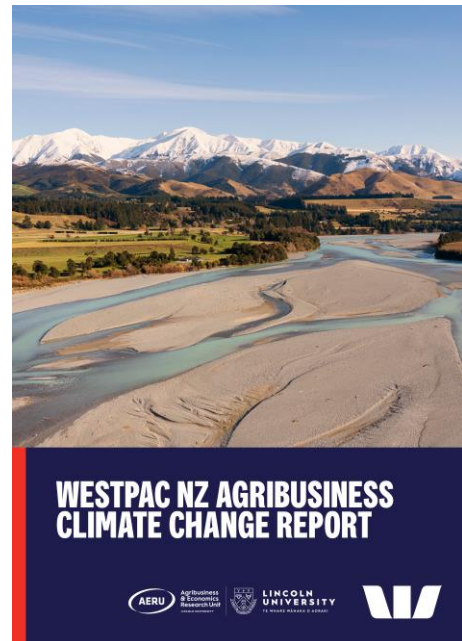
The purpose of the research was to help local enterprises achieve higher returns by ensuring their global consumers understand the distinctive qualities of the physical, credence and cultural attributes of agri food products made in New Zealand. The leaders of the programme have prepared a final report on the results from the research, which can be downloaded at:

<https://www.aeru.co.nz/projects/uep>

Westpac NZ Agribusiness Climate Change Report

Westpac commissioned AERU research on physical and transition risks and opportunities presented by climate change to New Zealand's primary sector (focusing on dairy, sheep/beef, and horticulture) to the middle of the century, as well as the sector's vulnerabilities and potential actions to address the effects of climate change. Anita Wreford, Meike Guenther and Timothy Driver carried out the research, with contributions from John Saunders, Heather Craig, Ryan Paulik and Philip Journeaux.

The report focuses on two major risk categories – physical risks and transition risks. The analysis models the resulting risk exposure out to 2050. It highlights the critical importance of improving farm management practice for avoiding profit loss. The full report can be downloaded [here](#).



The AERU Website



The AERU publishes results from its research on a website maintained by Timothy Driver at the following address:

<https://www.aeru.co.nz/>

Contact Details: Professor Paul Dalziel, AERU, Lincoln University (Paul.Dalziel@lincoln.ac.nz).